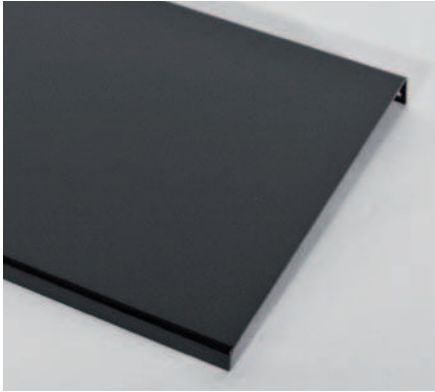


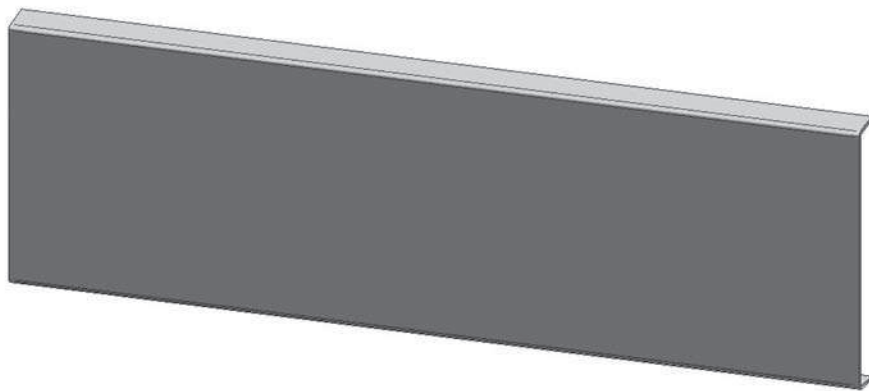
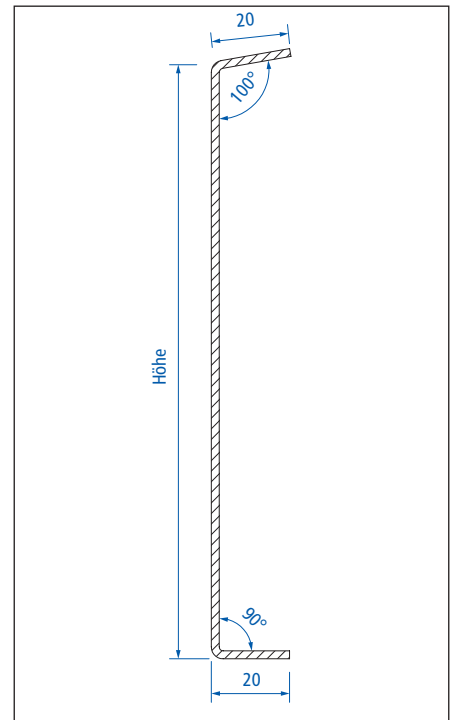
SOCKELBLECHE



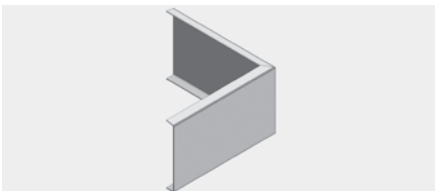


**SOCKELBLECHE
 TYP 1**

AUFMASS



ECKEN



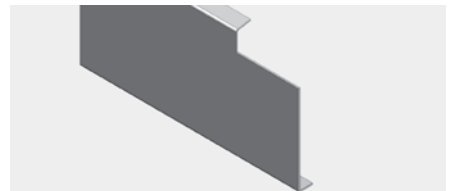
Ausseneck Typ 1

SEITENTEIL



Seitenteil

KLINKUNG

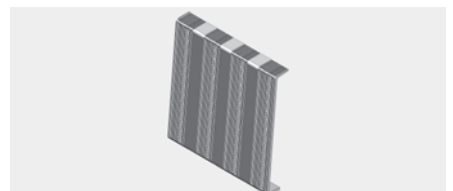


Klinkung Typ 1

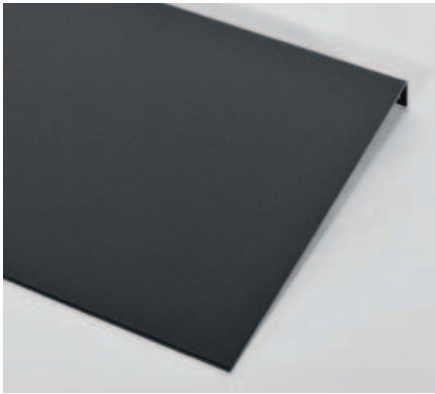


Inneneck Typ 1

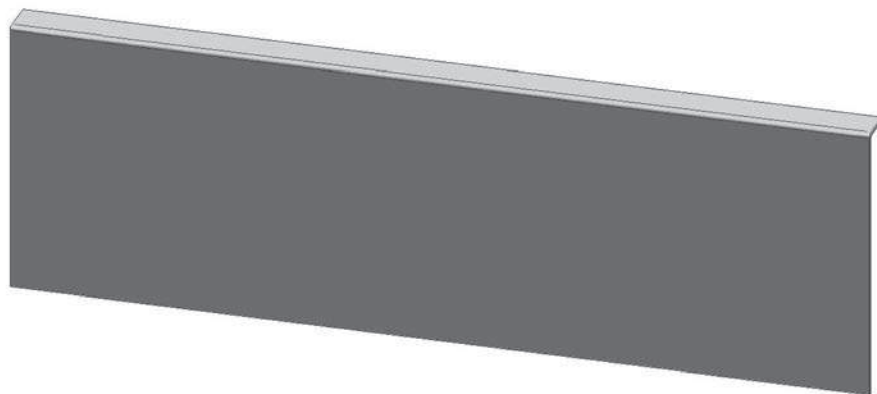
DILA



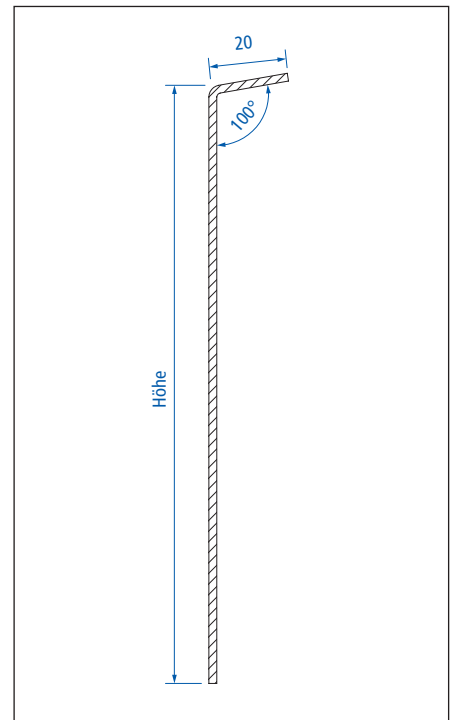
Dila Typ 1



SOCKELBLECHE TYP 2



AUFMASS



ECKEN



Ausseneck Typ 2

SEITENTEIL



Seitenteil

KLINKUNG

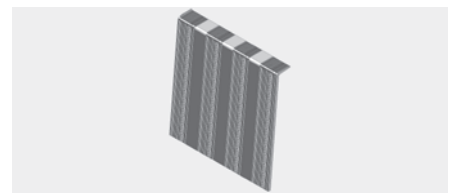


Klinkung Typ 2

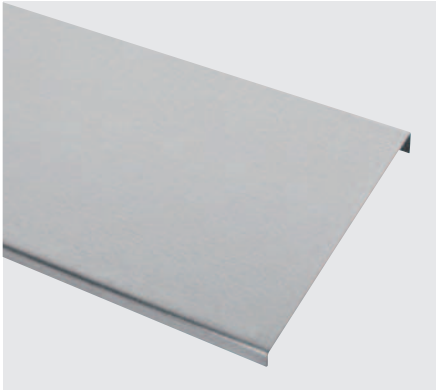


Inneneck Typ 2

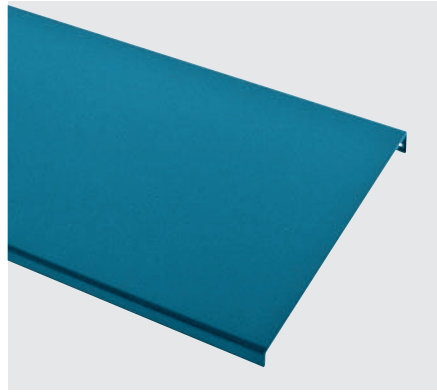
DILA



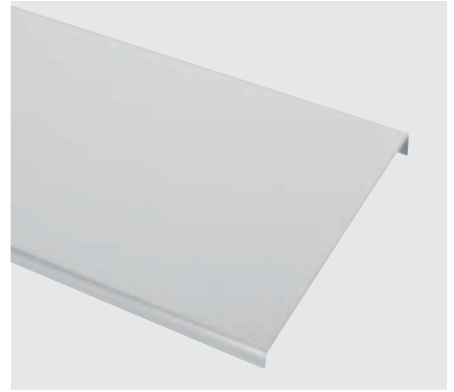
Dila Typ 2



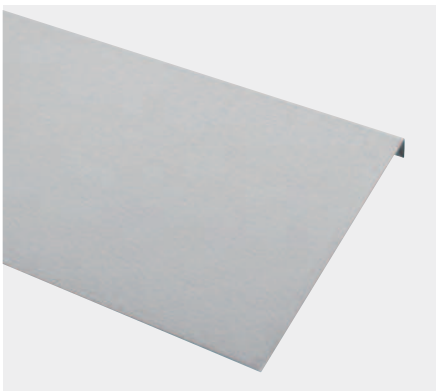
Sockelblech, Typ 1, chromstahl



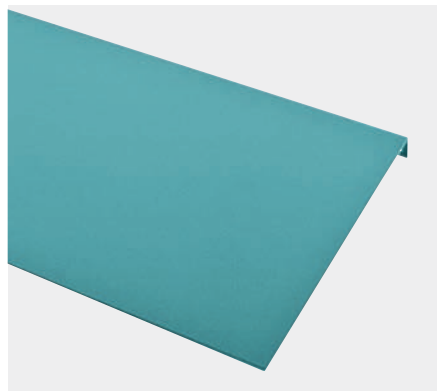
Sockelblech, Typ 1, einbrennlackiert



Sockelblech, Typ 1, eloxiert



Sockelblech, Typ 2, chromstahl



Sockelblech, Typ 2, einbrennlackiert



Sockelblech, Typ 2, eloxiert